



Shipping Container Homes

MODULAR LIVING SPACES





Shipping Container Homes

TECHNICAL DETAILS

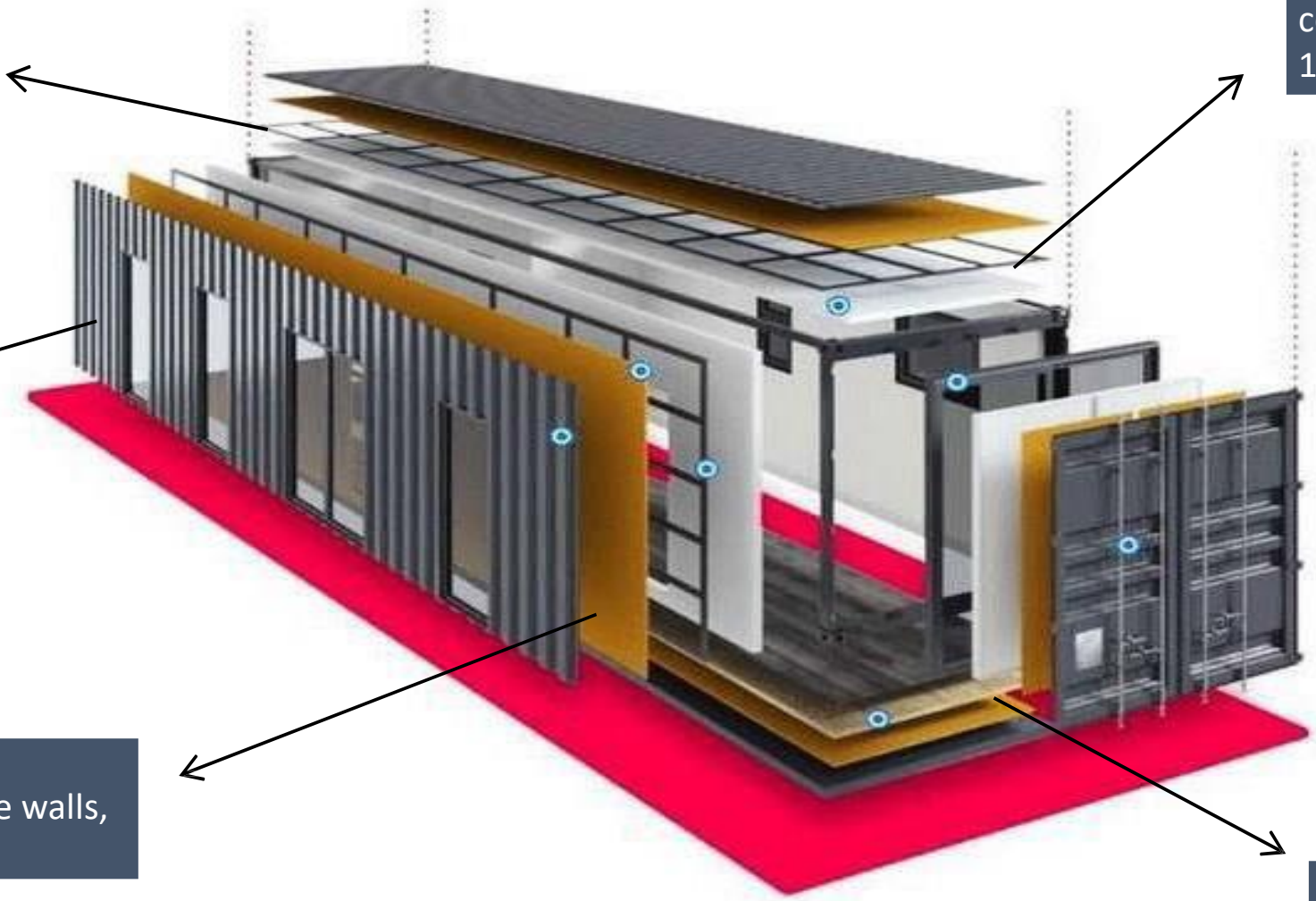
Corten steel sealing

Corten steel side walls

Insulation with 50mm polyurethane foam on the walls, ceiling and floor

Interior walls and ceiling covered with 12 mm plasterboard

Floor covering with ceramic or parquet



ZEN HOME 20DC/HC



Zen Home 20DC/HC is an adaptation of the new 20ft shipping container

1 Bathroom – Open Kitchen, Living or Bedroom

ZEN HOME 20DC

External dimensions : 6,05m x 2,44m x 2,60m

Internal dimensions : 5,89m x 2,35m x 2,40m

ZEN HOME 20HC

External dimensions : 6,05m x 2,44m x 2,90m

Internal dimensions : 5,89m x 2,35m x 2,70m

Price: 14.500 EUR + VAT – ZC 20DC

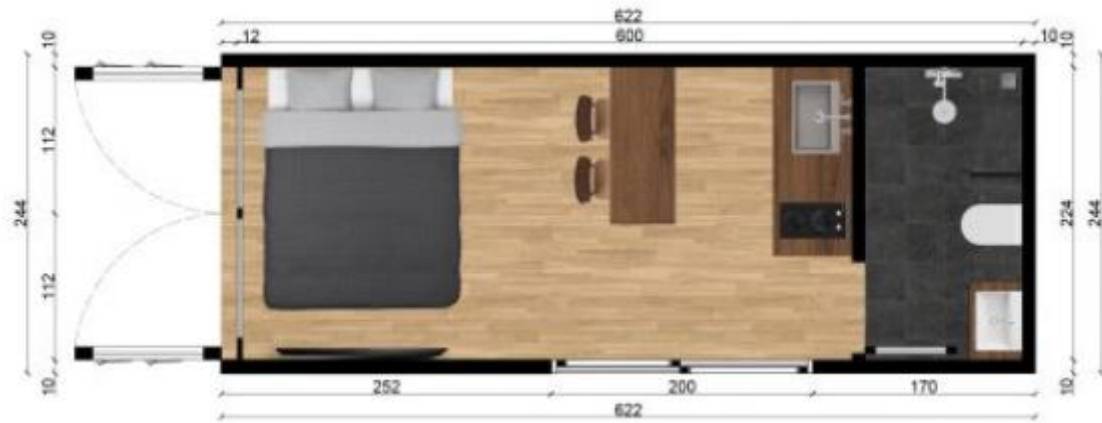
Price: 16.250 EUR + VAT – ZC 20HC

LAYOUT PLANS

ZEN HOME 20DC/HC



LIVING + OPEN KITCHEN - 11,6 m²
BATHROOM - 3,4 m²
TOTAL AREA - 15 m²



LIVING + OPEN KITCHEN - 11,6 m²
BATHROOM - 3,4 m²
TOTAL AREA - 15 m²

ZEN HOME 30HC



Zen Home 30HC is an adaptation of the new 30ft shipping container

1 Bathroom – Open Kitchen, Living and Bedroom

ZEN HOME 30HC

External dimensions : 9,00m x 2,44m x 2,90m

Internal dimensions : 8,84m x 2,35m x 2,70m

Price: 21.000 EUR + VAT

LAYOUT PLANS

ZEN HOME 30HC



DORMITOR - 7,5 m²
LIVING + OPEN KITCHEN - 11,1 m²
BATHROOM - 3,4 m²
TOTAL AREA - 22 m²



DORMITOR - 7,2 m²
LIVING + OPEN KITCHEN - 11,5 m²
BATHROOM - 3,3 m²
TOTAL AREA - 22 m²

ZEN CASA 40HC



Zen Home 40HC is an adaptation of the new 40ft shipping container

1 or 2 Bedroom – 1 Bathroom - Living and Open Kitchen

ZEN HOME 40HC

External dimensions : 12,19m x 2,44m x 2,90m

Internal dimensions : 12,03m x 2,35m x 2,70m

Price: 25.250 EUR + VAT

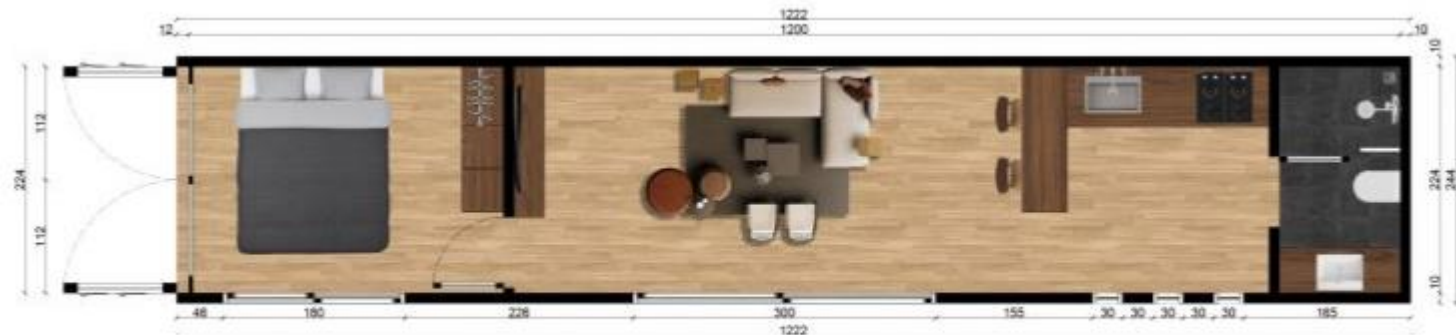


LAYOUT PLANS

ZEN HOME 40HC



BEDROOM - 8,1 m²
 LIVING + OPEN KITCHEN - 18,5 m²
 BATHROOM - 3,4 m²
 TOTAL AREA - 30 m²



BEDROOM - 7,2 m²
 LIVING + OPEN KITCHEN - 11,5 m²
 BATHROOM - 3,3 m²
 TOTAL AREA - 30 m²



BEDROOM BIG - 7,7 m²
 BEDROOM SMALL - 4,8m²
 LIVING + OPEN KITCHEN - 13,8 m²
 BATHROOM - 3,7 m²
 TOTAL AREA - 30 m²



Shipping Container Homes

EXECUTION AND STANDARD EQUIPMENT



NEW SHIPPING CONTAINER

The adaptation of the shipping container home is done on a new container that has made a single journey. The shipping container is made of weather-resistant steel. Corten Weathering Steel has been specially designed and developed to minimize corrosion in the very harsh atmospheric conditions of the marine environment.



INTERIOR AND EXTERIOR FACADE PAINT

On outside surface of the unit, 2 layers of Jotun brand epoxy primer are applied, and 2 layers of Jotun brand marine paint, which has anti-UV characteristics. The interior is painted with primer and 2 layers of paint.



MODIFICATION OF CONTAINER DESIGN

Cutting and removing the wall elements from the container sheet. Preparing the structure for the installation of windows and doors. Prefabrication and welding with high quality welds. The high accuracy and aesthetics of the work performed.



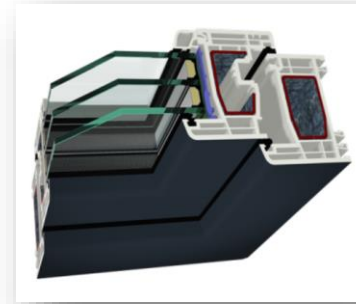
LAMINATED / CERAMIC PARQUET FLOOR

For the floor, we use Platinum Series of Swiss Krono brand 10 mm parquet or 9 mm shock-resistant ceramic tiles.



THERMAL INSULATION

5 cm polyurethane foam flooring is used on all walls, floor, ceiling and intermediate walls. Partition heat transfer coefficient $U 0.30 [W/(m^2 \cdot K)]$. Polyurethane foam represents a complete method of thermal, acoustic and/or hydro insulation. Increased energy efficiency; 1cm foam = up to 3cm mineral wool. A barrier against moisture, condensation and mold will be non-existent. Fire barrier, the foam contains self-extinguishing substances.



CARPENTRY ANTHRACITE FOR WINDOWS AND DOORS

For PVC sliding windows and doors, we use one of the best German brand Gealan, S8000 series. Our customers can also choose the aluminum carpentry option. There is a piece of 180x220 and a piece of 300x220 sliding doors in Zen Home with the length of 9 and 12 meters; a piece of 200x220 double sliding door is used in Zen Home 6 meters long.



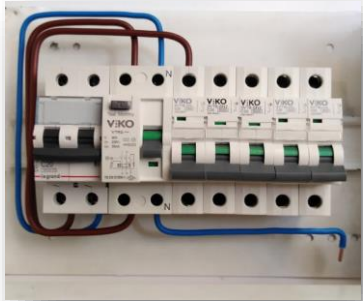
Shipping Container Homes

EXECUTION AND STANDARD EQUIPMENT



KITCHEN

In the Kitchen, the MDF case and high-quality lacquered veneer cover were used. Kitchen tops 160 cm at 20HC, 180 cm at 30HC and 40HC are applied from solid wood with a thickness of 28-38 mm. 40 cm stainless steel kitchen sink and stainless-steel faucet.



ELECTRICAL INSTALLATION

Fully flame-retardant Halogen-Free cable is used in our electrical installation. The entire fuse panel, 25 Amp fuse sockets, 10 Amp lighting fixtures, surge protector, leakage current relay are used. The TV infrastructure is ready for use.



PLUMBING AND SANITARY GROUP

In the bathroom; there is a toilet bowl, a built-in tank and a bathroom sink. Bathroom sinks are left to the customer's preference over the counter or built-in. The bathroom floor and the entire shower area are covered with tiles, the other walls are covered with water and moisture resistant plasterboard. The shower system is included. The electrical and sanitary lines for the instant water heater in the bathroom are left ready.



INTERIOR DOORS - AIR CONDITIONING LINES - INTERIOR LIGHTING

There is 1 matt white lacquered interior door 80x210 for the 6-meter product and 2 pieces for the 9- and 12-meter products. Ready-made air conditioning infrastructure for the living room and bedroom. In the bathroom, 2 LED spots, in the living room and kitchen, 6 LED spots are used in all models. In the bedroom 30HC and 40HC, 2 led spots are used.



EXTERNAL LIGHTING - WATER LINE

30HC and 40HC products have 4 front wall sconces, 2 rear wall sconces are applied. 20HC products have 2 front wall sconces and 1 rear wall sconce.

A covered rainproof outlet and faucet line are left ready for outdoor use.



WALL AND CEILING FINISHES

The interior walls and ceiling are framed with steel, covered with plasterboard and painted. The building has insulation parameters at the level of a traditional single-family house. Our insulation provides comfortable living conditions.



Shipping Container Homes

MODULAR PLANNING

ZC – M45



39.875 €

ZC – M60



47.975 €

ZC – M75



62.600 €

The biggest advantage of shipping containers is that different sizes of containers can be combined to create living spaces in different styles.



Shipping Container Homes

OPTIONAL EQUIPMENT

UNDERFLOOR HEATING	: ElectricAL heating in the floor with mat	€85/m2
HEATING PUMP	: Air-water for heating and cooling
FIREPLACE EVACUATION	: Chimney and stove cover with heat and water insulation	€500
AC	: Base price	€550
FIREPLACE STOVE	: Made of steel sheet	€850
ADDITIONAL KITCHEN SPACE	: Extra space	€300/m liniar
EXTERIOR STAIRS	: From steel sheet	€.1000
TERRACE BALUSTRADE	: 20X40 made of steel, 5 rows of chrome rope	€85/m liniar
ALUMINUM CARPENTRY	: The price is calculated according to the project

*The price does not include landscaping, the terrace, the roof of the terrace, and interior/external furniture.

**The price may change depending on the evolution of the prices of the materials used.

***Prices does not contain VAT.